

An Outcome Analysis of Connecticut's Halfway House Programs

Stephen M. Cox, Ph.D.

Professor

Department of Criminology and Criminal Justice

Central Connecticut State University

Study Impetus and Purpose

- Limited research on CT halfway houses
- 2008 CT Annual Recidivism Study found that 4% of halfway house attendees were rearrested while in the halfway house (only descriptive)
- Study Purpose
 - provide descriptions of the characteristics of inmates who are placed in halfway houses
 - identify differences between halfway house completers and non-completers
 - compare the short and long term effects of halfway house participants released to parole

Connecticut's Halfway Houses

- All halfway houses are operated by non-profits
- 49 Halfway Houses (8 for females only)
- 1,027 beds
- Three types of halfway houses
 - Work Release
 - Substance Abuse
 - Mental Health
- Preferred Length of Stay is 4 to 6 months (can be up to 18 months)

Halfway House Eligibility

- The inmate must receive a level one or level two classification from the classification committee on the risks and needs assessment
- The inmate must be within 18 months of discharge
- The inmate must have no "class A" (violent, or otherwise serious) disciplinary incidents within the previous 120 days
- The inmate must have no "class B" incidents within the previous 60 days
- The inmate must have no escapes within the previous year
- The inmate must have no community release failure within the previous six months
- The inmate must have no pending charges

Review of Halfway House Literature

Halfway House attendees have lower rearrest rates one year following release

Halfway House Completers and Low Recidivism

- Older
- Employed
- More education
- Fewer prior arrests
- No substance abuse problems

Method and Data

- Secondary analysis of electronic data
- Sample consisted of inmates whose first release in 2004 was to a halfway house (n=1,686)
- Department of Correction
 - inmate demographics
 - inmates' movements from and into DOC facilities and community supervision programs
 - DOC risks and need scores
 - court sentencing data for all sentences that resulted in prison terms
- Judicial Branch
 - arrest histories

Demographics of Halfway House Participants

	Number	Percentage of Total
Gender		
Males	1,428	85%
Females	258	15%
Race/Ethnicity		
White	567	34%
African-American	725	43%
Hispanic	386	23%
Other	8	0.50%
Age		
16 to 19	102	6%
20 to 29	613	36%
30 to 39	529	31%
40 to 49	369	22%
50 and Older	73	4%
Reported Town of Residence		
Three Large Cities	681	40%
Other Urban	238	14%
Urban Periphery	497	30%
Suburban	107	6%
Rural	85	5%
Other	59	5%

Halfway House Completion Rates

	Number	Percentage	Average Days in Program*
Completed	1,133	67%	189
Violated	483	29%	105
Arrested	70	4%	176
Total	1,686	100%	

*F-test for average days in program equals 150.12, p. <.05

Outcomes by Demographics

	Completed	Arrested	Violated	Total
Gender*				
Males	66% (946)	5% (66)	29% (416)	1,428
Females	73% (187)	2% (4)	26% (67)	258
Race/Ethnicity				
White	70% (397)	4% (24)	26% (146)	567
African-American	64% (464)	6% (40)	30% (221)	725
Hispanic	69% (266)	2% (6)	30% (114)	386
Other	75% (6)	0	25% (2)	8
Age*				
16 to 19	54% (55)	6% (6)	40% (41)	102
20 to 29	66% (403)	2% (13)	32% (197)	613
30 to 39	67% (356)	5% (25)	28% (148)	529
40 to 49	73% (269)	6% (23)	21% (77)	369
50 and Older	68% (50)	4% (3)	27% (20)	73
Residence*				
Three Large Cities	63% (432)	5% (35)	31% (214)	681
Other Urban	64% (152)	3% (7)	33% (79)	238
Urban Periphery	72% (356)	5% (23)	24% (118)	497
Suburban	71% (76)	1% (1)	28% (30)	107
Rural	78% (66)	4% (3)	19% (16)	85
Other	63% (37)	2% (1)	35% (21)	59

Multinomial Regression for Technical Violations

	B	Std. Error	Wald	Significance	Odds Ratio
Intercept	-1.8168	0.6082	8.9234	0.00	
Age at Half. House Entry	-0.0299	0.0074	16.1791	0.00	0.9706
Prior Prison Sentences	0.0561	0.0230	5.9499	0.01	1.0577
Offense Severity	0.0462	0.0256	3.2625	0.07	1.0473
Risk: Severity/Violence	-0.1343	0.0788	2.9050	0.08	0.8743
Risk: Sentence Length	-0.5934	0.2237	7.0381	0.00	0.5525
Risk: Overall	2.2985	0.2350	95.6564	0.00	9.9596
Prior Arrests	-0.0110	0.0099	1.2366	0.26	0.9890
Males	0.1125	0.1684	0.4465	0.50	1.1191
Property Crime	0.3735	0.1405	7.0701	0.01	1.4528
VOP Crime	0.5144	0.1909	7.2620	0.01	1.6726
Urban Residence	0.4254	0.1223	12.1044	0.01	1.5303

Multinomial Regression for New Arrests

	B	Std. Error	Wald	Significance	Odds Ratio
Intercept	-8.2790	1.1219	54.4576	0.00	
Age at Half. House Entry	0.0125	0.0170	0.5381	0.46	1.0126
Prior Prison Sentences	0.0993	0.0374	7.0524	0.01	1.1044
Offense Severity	-0.1220	0.0471	6.7032	0.01	0.8852
Risk: Severity/Violence	0.4494	0.1625	7.6510	0.01	1.5674
Risk: Sentence Length	0.7064	0.2525	7.8289	0.01	2.0268
Risk: Overall	1.2326	0.4710	6.8488	0.01	3.4300
Prior Arrests	0.0375	0.0154	5.9494	0.01	1.0382
Males	0.6992	0.5343	1.7128	0.19	2.0121
Property Crime	0.8039	0.3036	7.0124	0.01	2.2343
VOP Crime	0.8685	0.4284	4.1089	0.04	2.3833
Urban Residence	0.5401	0.2778	3.7799	0.05	1.7163

Nagelkerke R²=.21, Cox and Snell R² = .16

What Happens After Halfway House Completion?

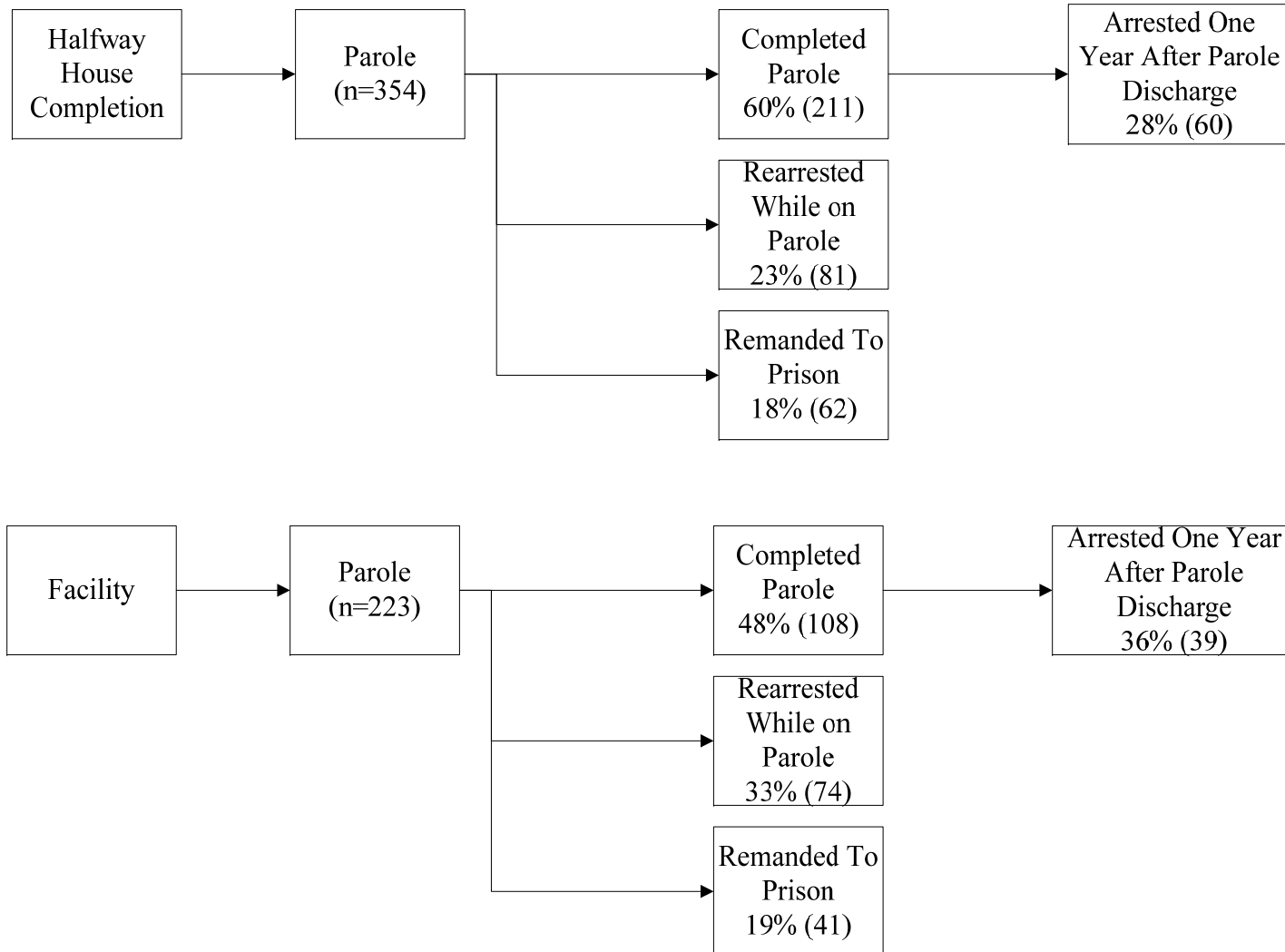
- Prior study was limited to program completion
- What are the short and long term effects of halfway house completion?
- To address this, we conducted a second analysis using:
 - male halfway house participants paroled after completion
 - propensity score matching to create a comparison group of parolees who did not attend a halfway house prior to parole
 - Outcomes of (1) parole completion and (2) rearrest one year following parole completion

Propensity Score Matching Results

		Halfway House (n=354)	Facility (n=223)
Gender	Males	100%	100%
Race/ Ethnicity	African-American	44%	48%
	Caucasian	23%	22%
	Hispanic	33%	30%
Type of Town	Three Cities	42%	50%
	Other Urban	19%	14%
	Urban Periphery	31%	30%
	Suburban	6%	4%
	Rural	3%	2%
	Other	1%	1%
Type of Crime	Drug	38%	38%
	Property	29%	28%
	Violent	13%	12%
	Motor Vehicle	3%	2%
	Prob. Viol.	8%	11%
	Other	10%	10%

	Halfway House (n=354)	Facility (n=223)
Age at Prison Release	31	32
Prior Arrests	11	11
Prior Convictions	7	8
Prior Prison Sentences	3	3
Offense Severity	8	8
DOC Needs Scores		
Mental Health (1 to 5)	1.3	1.4
Substance Abuse (1 to 5)	3.3	3.4
Education (1 to 5)	2.5	2.6
Sex Offender (1 to 5)	1.0	1.0
Vocational (1 to 5)	3.6	3.5
DOC Risk Scores		
Violence History	1.5	1.7
Severity of Offense	2.3	2.4
Sentence Length	2.2	2.3
Discipline History	1.2	1.3
Security	1.1	1.1
Overall	1.0	1.0

Halfway House Parolees and Facility Parolees



Successful Parole Discharge

	B	Stan. Error	Wald	Significance	Odds Ratio
<i>Age at Prison Release</i>	<i>0.3519</i>	<i>0.1263</i>	<i>7.7669</i>	<i>0.01</i>	<i>1.4218</i>
Prior Arrests	-0.0178	0.0305	0.3399	0.56	0.9824
Prior Convictions	-0.0211	0.0492	0.1837	0.67	0.9792
Prior Prison Sentences	-0.0500	0.0407	1.5056	0.22	0.9513
Offense Severity	0.0444	0.0416	1.1420	0.29	1.0454
Need: Mental Health	0.0140	0.1538	0.0083	0.92	1.0141
Need: Substance Abuse	-0.1089	0.1154	0.8901	0.34	0.8968
Need: Education	-0.1375	0.1044	1.7339	0.18	0.8715
Need: Vocational	0.0360	0.1301	0.0764	0.78	1.0366
Risk: Violence History	0.0024	0.1105	0.0005	0.98	1.0024
<i>Risk: Severity/Violence</i>	<i>0.5546</i>	<i>0.1164</i>	<i>22.7038</i>	<i>0.00</i>	<i>1.7412</i>
<i>Risk: Sentence Length</i>	<i>-0.8865</i>	<i>0.1950</i>	<i>20.6786</i>	<i>0.00</i>	<i>0.4121</i>
<i>Halfway House Completion</i>	<i>0.5346</i>	<i>0.1859</i>	<i>8.2691</i>	<i>0.00</i>	<i>1.7068</i>
Urban Residence	-0.1386	0.1940	0.5102	0.47	0.8706
Drug Offender	0.1066	0.2237	0.2270	0.63	1.1125
Property Offender	-0.1919	0.2399	0.6403	0.42	0.8254
Constant	0.4511	0.9099	0.2457	0.62	1.5700

Nagelkerke R²=.14, Cox and Snell R²=.11

One Year Arrest Following Parole Discharge

	B	Stan. Error	Wald	Significance	Odds Ratio
<i>Age at Prison Release</i>	-0.4364	0.2148	4.1265	0.04	0.6464
Prior Arrests	0.0821	0.0472	3.0222	0.08	1.0856
Prior Convictions	-0.0555	0.0733	0.5720	0.44	0.9460
Prior Prison Sentence	0.0014	0.0665	0.0004	0.98	1.0014
Offense Severity	-0.1108	0.0604	3.3656	0.06	0.8951
Need: Mental Health	-0.0263	0.2713	0.0094	0.92	0.9741
Need: Substance Abuse	-0.0266	0.1740	0.0233	0.87	0.9738
Need: Education	-0.0992	0.1635	0.3681	0.54	0.9055
<i>Need: Vocational</i>	0.4144	0.1978	4.3900	0.03	1.5134
Risk: Violence History	0.2635	0.1564	2.8381	0.09	1.3014
Risk: Severity/Violence	0.0288	0.1628	0.0314	0.85	1.0293
<i>Risk: Sentence Length</i>	-0.7196	0.3721	3.7401	0.05	0.4870
Halfway House Completion	-0.4865	0.2871	2.8720	0.09	0.6148
Urban Residence	-0.0369	0.2844	0.0169	0.89	0.9637
Drug Offender	-0.5292	0.3348	2.4988	0.11	0.5891
Property Offender	0.1409	0.3490	0.1631	0.68	1.1514
Constant	1.2074	1.4936	0.6535	0.41	3.3448

Nagelkerke R²=.19, Cox and Snell R²=.14

Summary of Findings

Halfway House participants who were arrested or returned to prison for technical violations were fairly similar:

- higher risk scores
- more extensive criminal history
- property or violation of probation offenders
- urban resident
- technical violators were younger

Halfway House completers were 1.7 times more likely to successfully complete parole (along with moderately severe offense, lower sentence length, older)

Halfway House completion had no significant effect on arrests one year after successful parole completion (vocational needs, younger, lower sentence length were predictive)

Conclusions and Recommendations

Halfway House completion increases the likelihood of successful parole discharge.

While halfway houses had short term effects on recidivism, it is inconclusive whether they have long term direct effects on recidivism.

Emphasis should be placed on controlling for program integrity using the Correctional Program Assessment Inventory or similar measures.