


What Can Victim Survey Data Tell Us About Violent Crime Trends in Rural, Suburban, and Urban Areas?

Janet L. Lauritsen

Department of Criminology and Criminal Justice
University of Missouri – St. Louis

JRSA Meetings, October 22, 2009

This project was supported by Award No. 2007-IJ-CX-0026 awarded by the National Institute of Justice, Office of Justice Programs, U.S. Department of Justice. The opinions, findings, and conclusions or recommendations expressed in this presentation are those of the author and do not necessarily reflect those of the Department of Justice.



Findings about Violence in Urban, Suburban, and Rural Areas

UCR crime data suggest:

- Violence is lowest in rural areas and highest in urban areas.
- Decline during 1990s did not extend to rural areas.
- No further disaggregation by victim characteristics (e.g., gender) except with SHR data.

Findings, cont'd

NCVS data suggest:

- Violence is lowest in rural areas and highest in urban areas.
- Declines in urban, suburban, and rural areas were similar during 1990s.
- Can be disaggregated by victim characteristics to allow further comparisons (e.g., male and female victimization in urban, suburban, and rural).

Are the trends in violence similar across areas?



Violence Against Women Research

- Alternative data sources show similar or higher levels of violence against women in rural areas.
- Declines in intimate partner *homicide* greater in cities with more domestic violence resources.
- Women in rural areas have less access to resources.

Have there been smaller decreases in non-lethal intimate partner violence in rural areas?


NIJ Gender and Violent Victimization Project

Purpose:

Use NCS/NCVS data to develop long-term trends (1973-2005) in violence by gender and other victim characteristics including; age, race/ethnicity, household poverty status, marital status (adults), family status (youths), and type of place (i.e., urban, suburban, and rural).

Develop long-term trends (1980-2005) further disaggregated by victim-offender relationship.

Research Questions

- 1) How do UCR and NCVS trends in violence for rural, suburban, and urban places compare?
 - 2) What are the trends in violence for rural, suburban, and urban males and females?
 - 3) What are the trends in stranger, known/non-intimate, and intimate partner violence for rural, suburban, and urban males and females?
- 

Data and Measures

Data

1973-1991 National Crime Survey, and
1992-2005 National Crime Victimization Survey

Weighting adjustments by crime type used for NCS data.

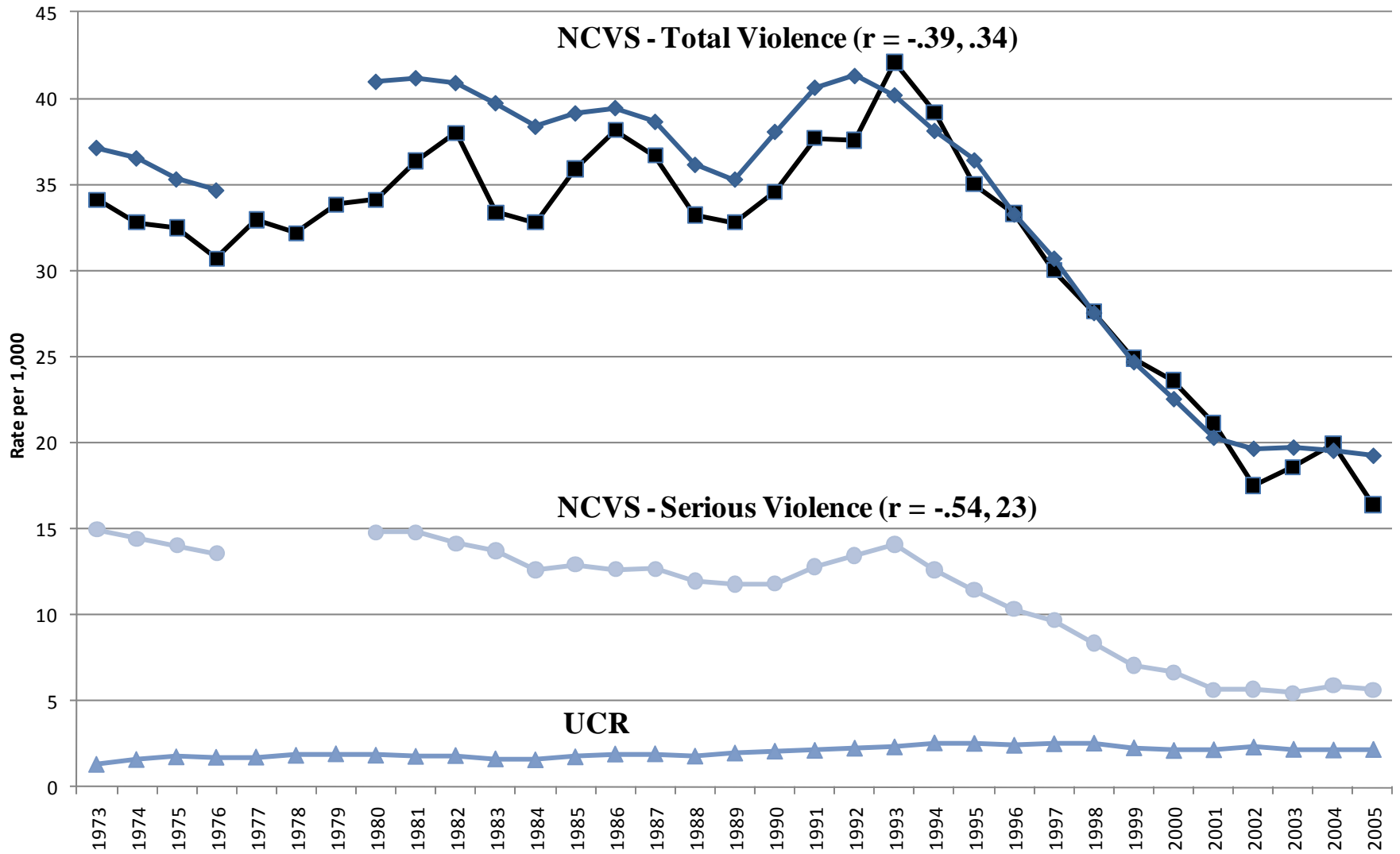
Measures

Violent victimization includes rape, robbery, aggravated and simple assault.

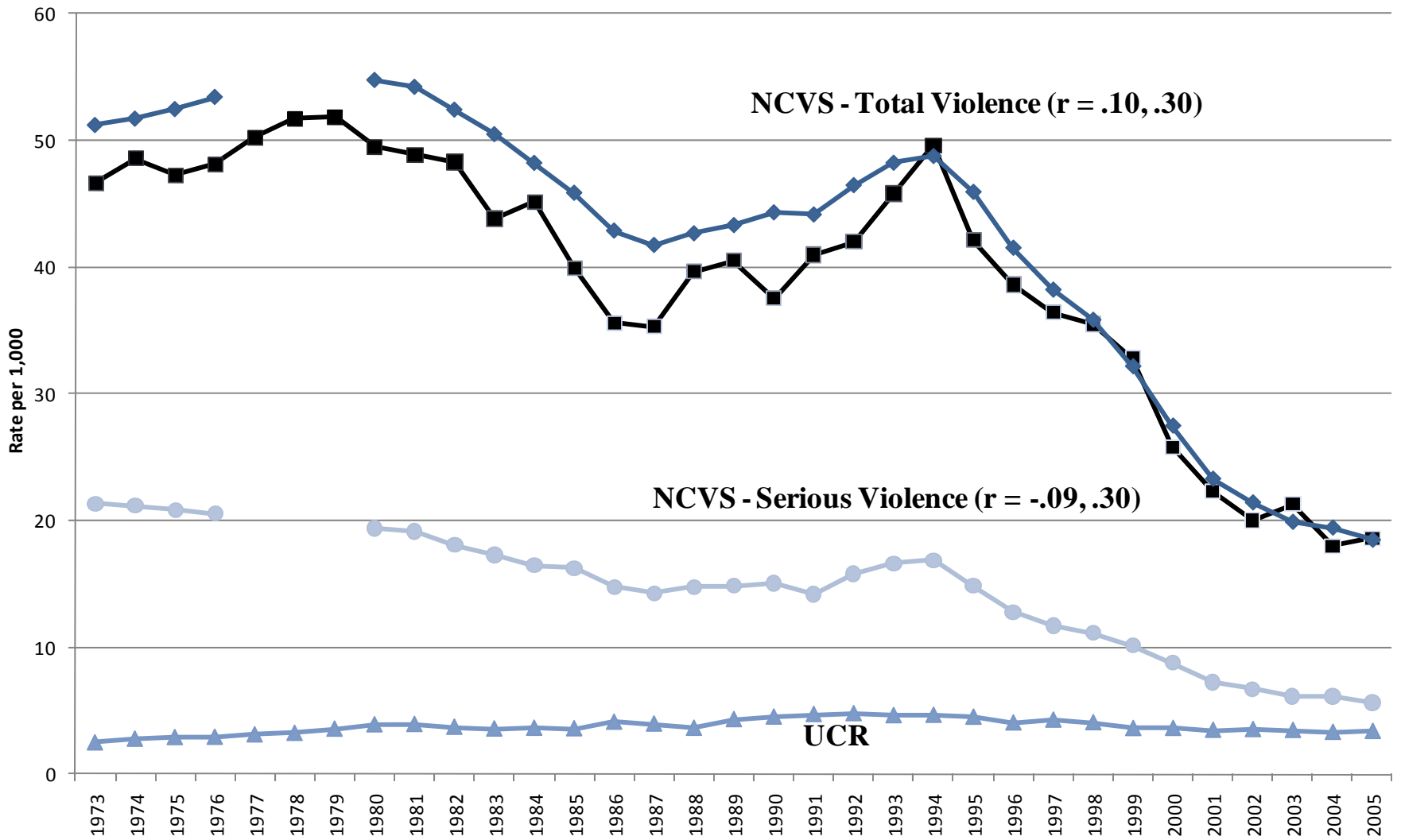
Serious violent victimization includes rape, robbery, and aggravated assault.

V-O categories include intimate partner, known/non-intimate, stranger.

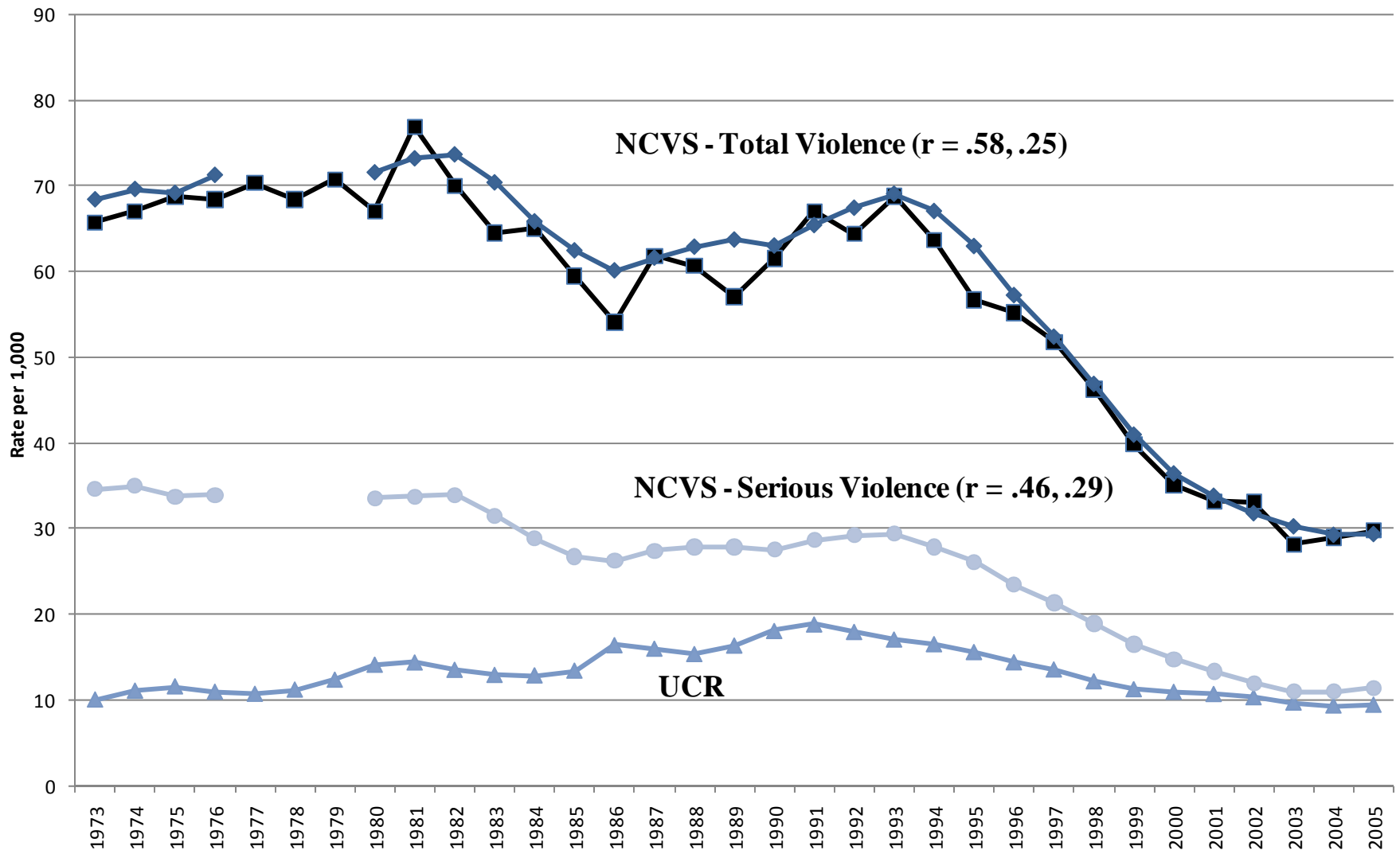
NCVS and UCR Trends in Violent Crime in Rural Places: 1973-2005



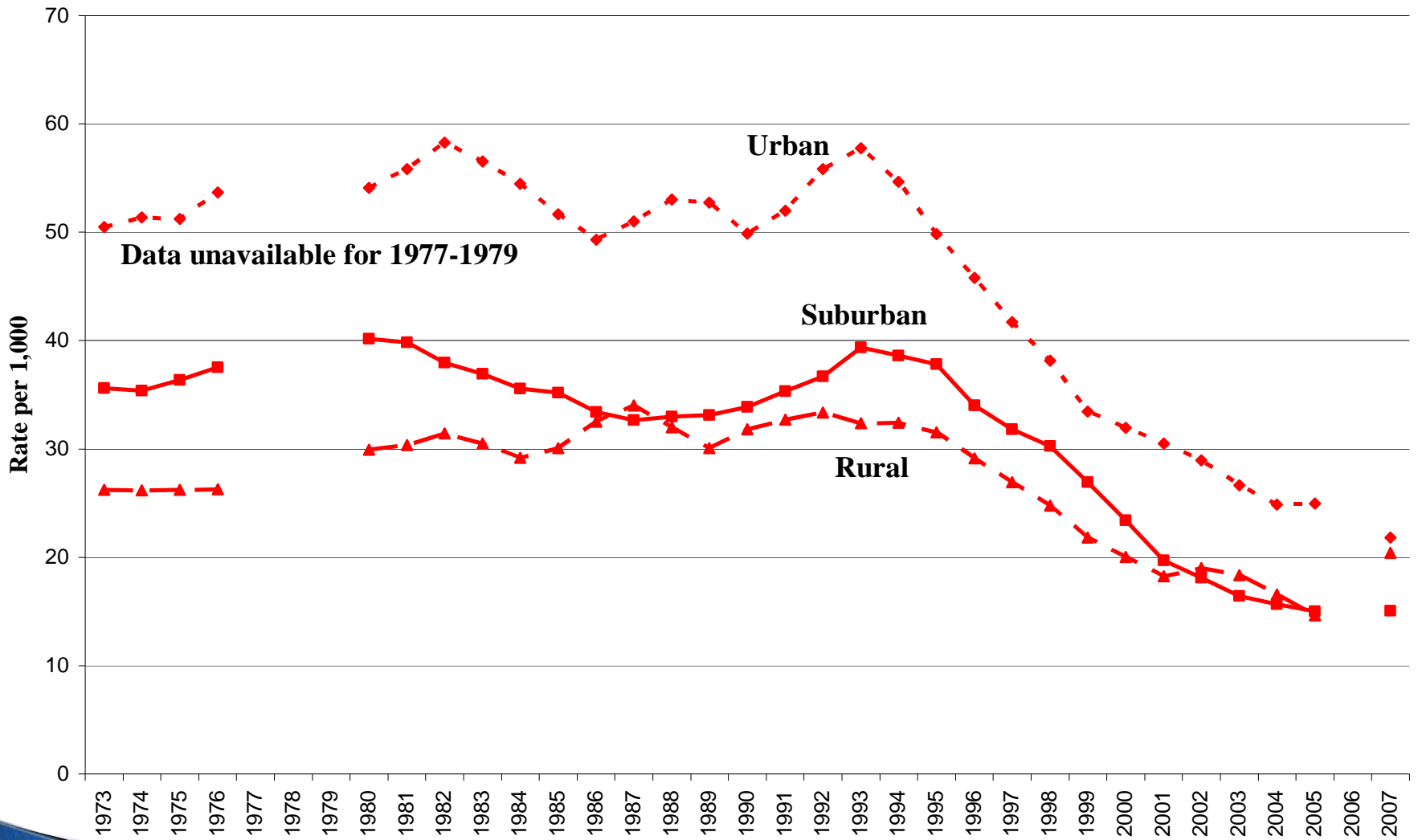
NCVS and UCR Trends in Violent Crime in Suburban Places: 1973-2005



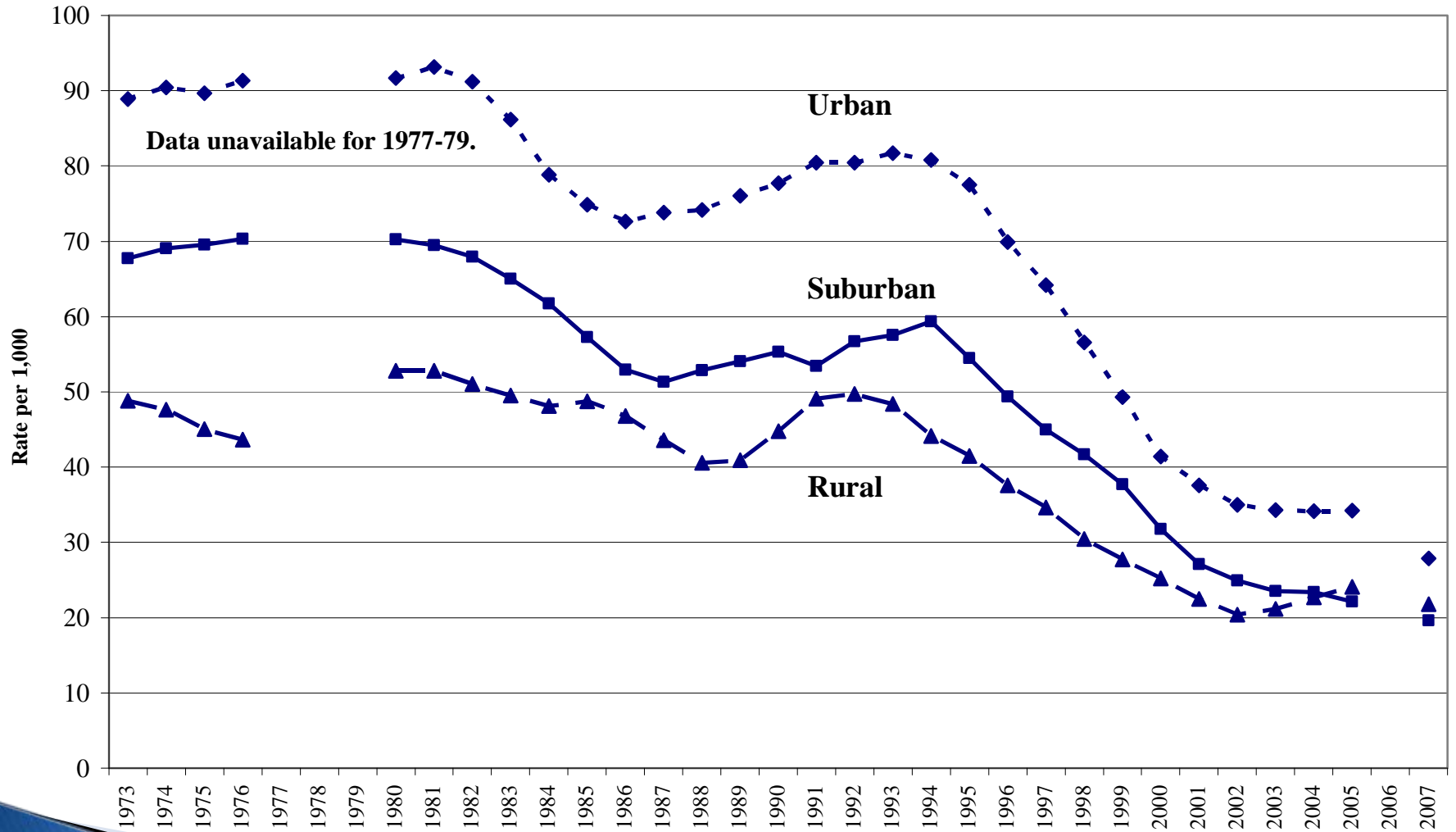
NCVS and UCR Trends in Violent Crime in Urban Places: 1973-2005



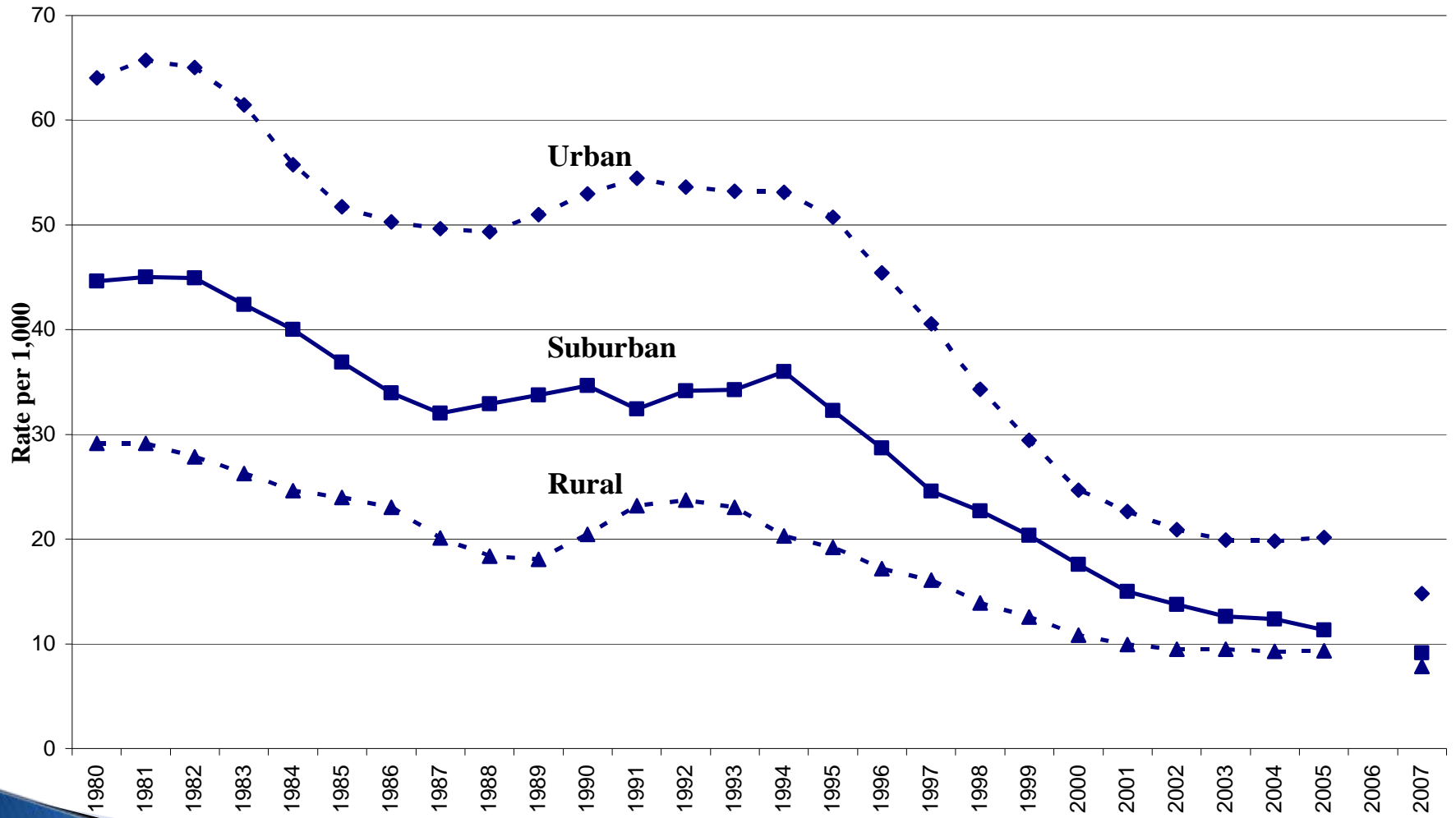
Female Violent Victimization by Type of Place: NCVS 1973-2007/8



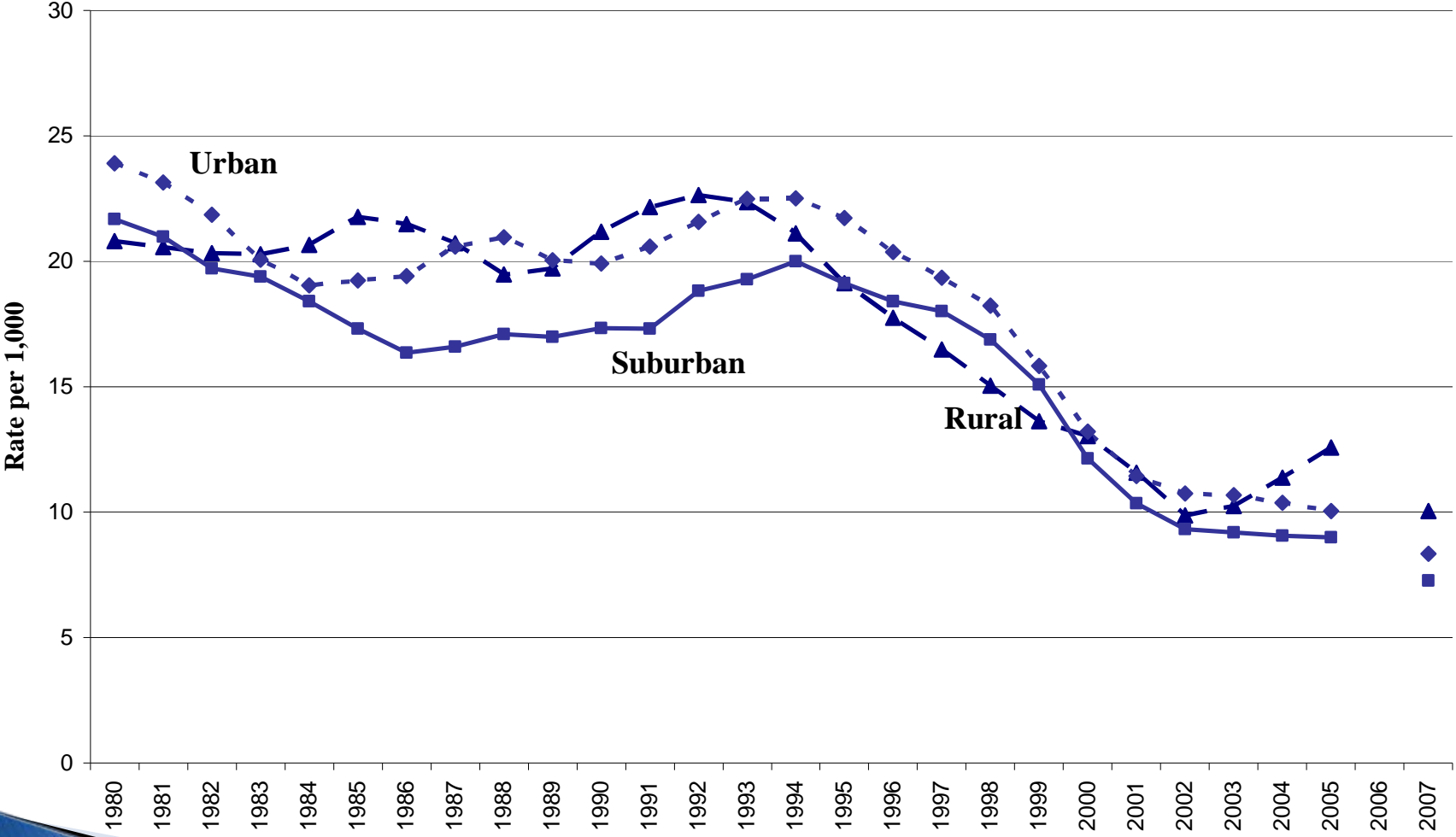
Male Violent Victimization by Type of Place: NCVS 1973-2007/8



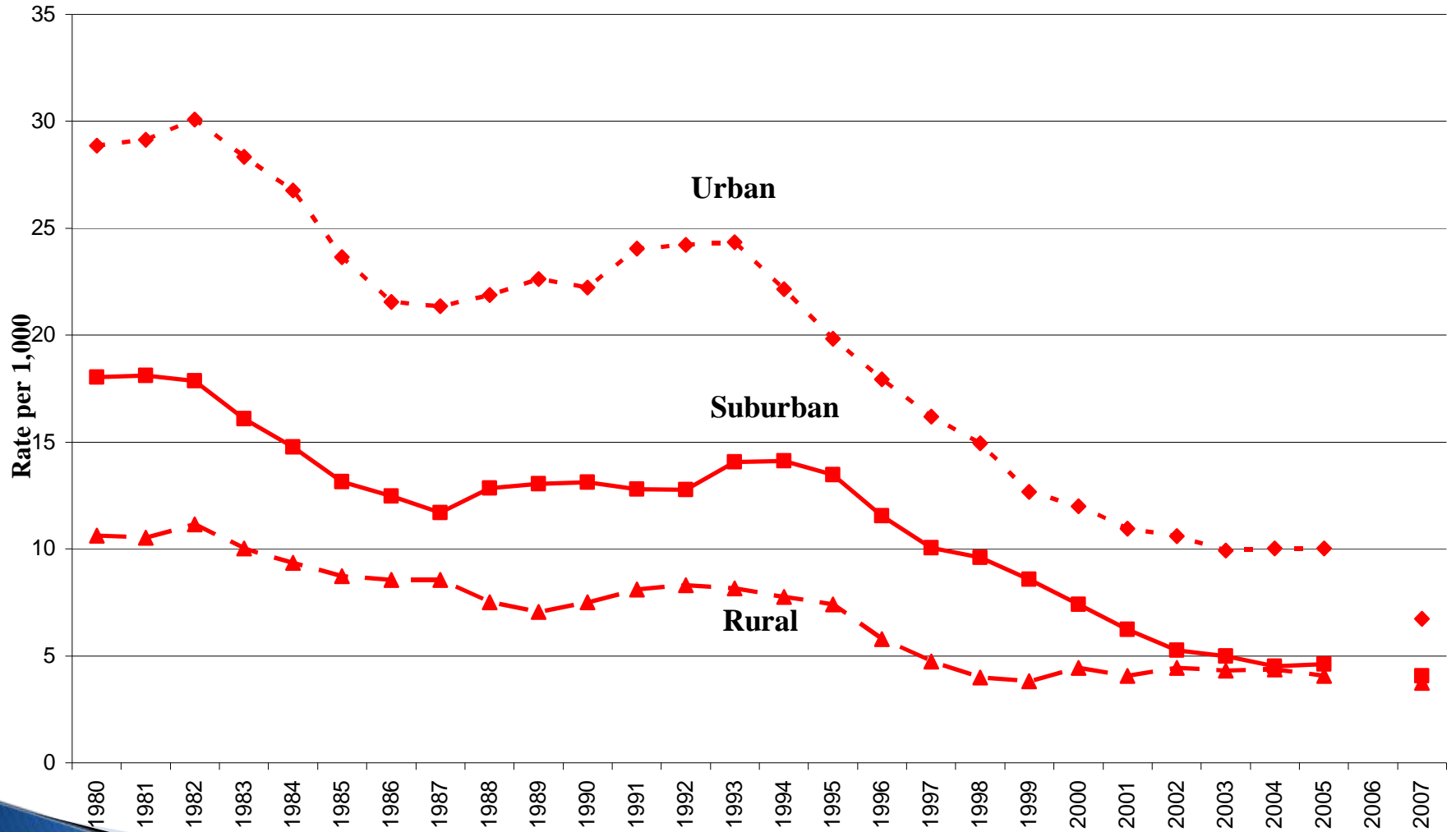
Male Stranger Violence by Type of Place: NCVS 1980-2007/8



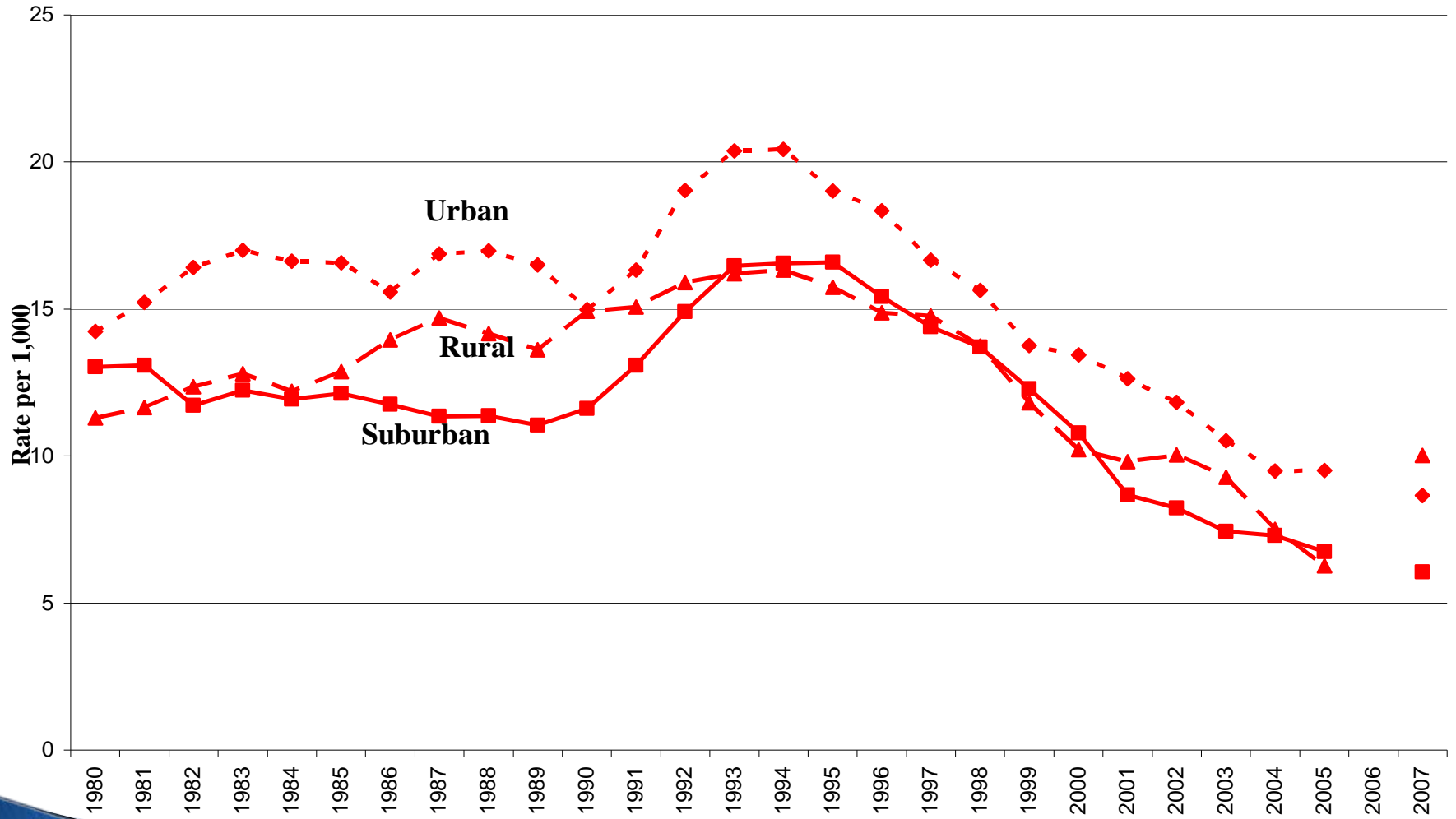
Male Known/Non-Intimate Violence by Type of Place: NCVS 1980-2007/8



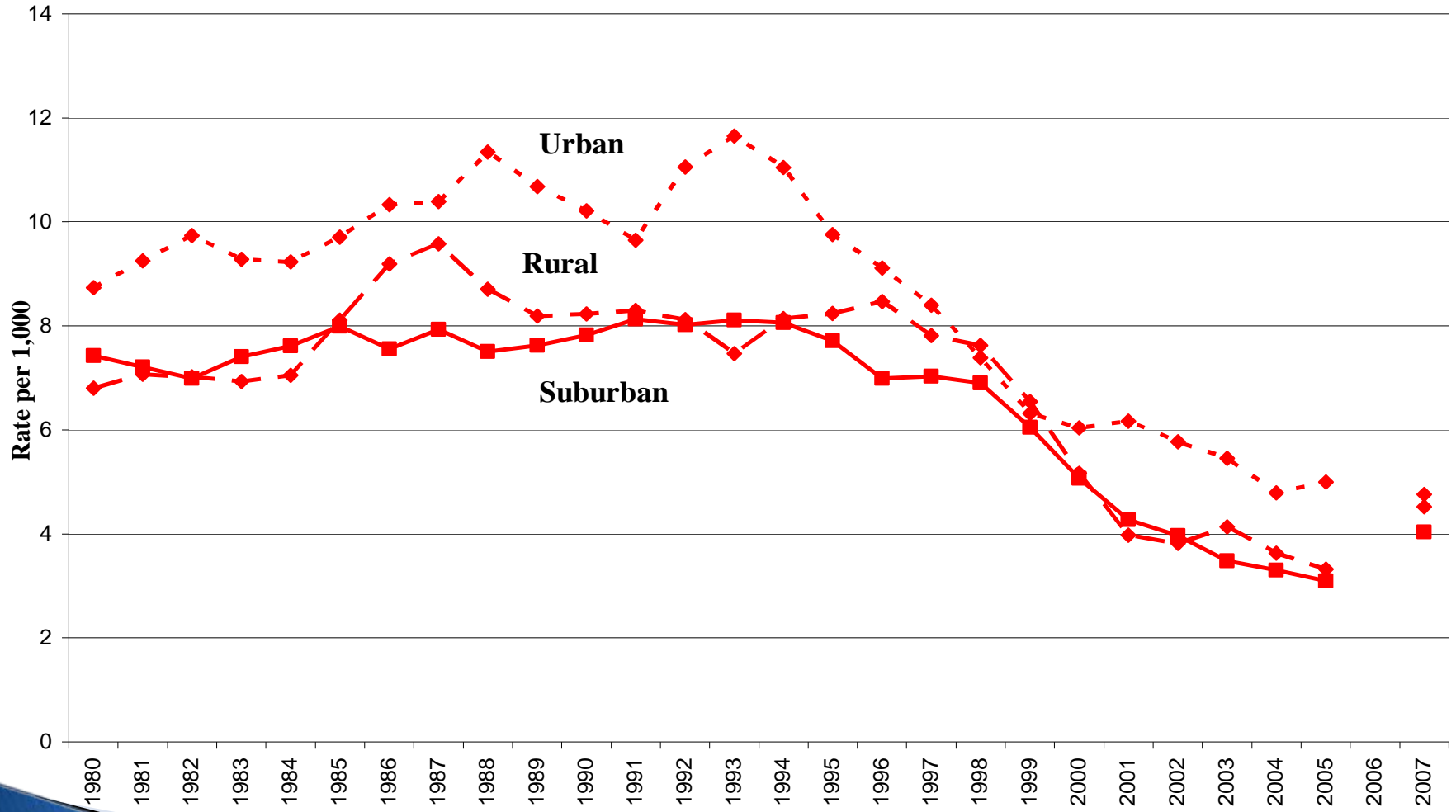
Female Stranger Violence by Type of Place: NCVS 1980-2007/8



Female Known/Non-Intimate Violence by Type of Place: NCVS 1980-2007/8



Female Intimate Partner Violence by Type of Place: NCVS 1980-2007/8



Summary of Long-term Trends

1. UCR and NCVS trend comparisons show:
 - *Greater long-term correspondence for urban areas.*
 - *Similar year-to-year changes across areas.*
2. Trends (1973-2005) by gender and place show:
 - *Male rates higher than female rates over time/place.*
 - *Somewhat greater declines in male victimization in urban and suburban areas; similar declines for males and females in rural areas.*
 - *Some decline in risk differences associated with place for males.*

Summary of Trends, cont'd

3) By type of crime, gender, and place (1980-2005):

➤ *Place differences greatest for stranger violence.*

Stranger violence:

➤ *Largest declines; similar in magnitude for males and females; somewhat greater in suburban areas; gender differences persist.*

Known/non-intimates:

➤ *Smallest declines; male declines greatest in urban and suburban areas; female declines smallest in urban areas. By 2005, no gender difference in risk in urban areas.*

Summary of Trends, cont'd

Intimate partner violence:

- *Declines smaller than declines in female stranger violence, but greater than declines in known/non-intimate violence.*
- *Declines in female intimate partner violence greatest in suburban areas (-58%) versus rural (-51%) and urban (-43%) areas.*
- *In 2005, IPV rates slightly lower than other types of violence against women.*

Value of Survey Data for Subgroup Trends

- ▶ Provides valuable information for rural areas/states.
 - ▶ Provides a wealth of information for conducting comparative analyses of crime trends.
 - ▶ Many similarities in trends, but also unique short-term patterns not detectable in UCR data.
 - ▶ Different rates of change over time by crime type (i.e., V-O) and subgroups poorly understood.
- 