

Family Violence Case Flow Analysis in Connecticut

CONNECTICUT STATISTICAL
ANALYSIS CENTER
Central Connecticut State University

CONNECTICUT JUDICIAL BRANCH
Court Support Services Division Family Services Division

Report Contributors

Stephen M. Cox, Ph.D
Director
Connecticut Statistical Analysis Center
Central Connecticut State University

Kathleen Bantley, Esq
Associate Professor
Department of Criminology & Criminal Justice
Central Connecticut State University

Lyndsay Ruffolo
Research Specialist
Institute for the Study of Crime & Justice
Central Connecticut State University

Stephen Grant
Director
Court Support Services Division
Family Services

Brian Hill
Manager
Center for Research, Program
Analysis and Quality Improvement
Court Support Services Division- Judicial

Joseph DiTunno
Program Manager
Family Services
Court Support Services Division- Judicial



Connecticut Statistical Analysis Center
Institute for the Study of Crime & Justice
Central Connecticut State University

Family Violence Law

- *Connecticut's Family Violence Prevention and Response Act Sec.46b-38c1* - October 1, 1986.
- Mandatory arrest policies, victim assistance programs, next day arraignment, clearly specified option of protective orders, agency training and specialized data collection
- Enhance collaboration between law enforcement, courts and social service providers when responding to incidents involving family violence.



Connecticut Statistical Analysis Center
Institute for the Study of Crime & Justice
Central Connecticut State University

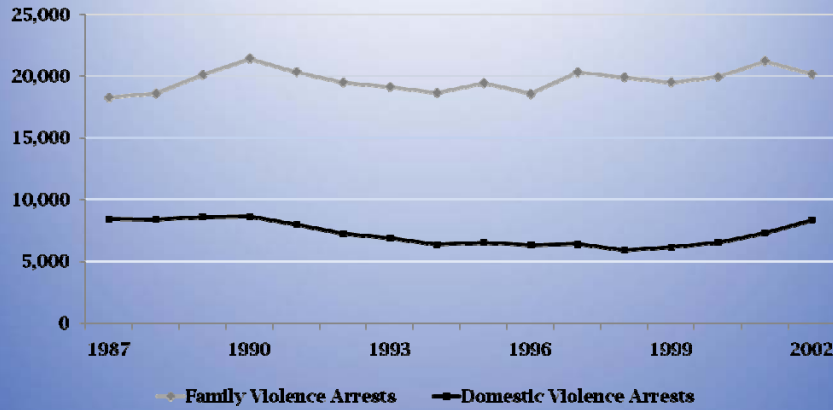
Family Violence Case Flow Analysis, 2007

- ❖ Provides an overview of the court's processing of family violence arrests
- ❖ Provides some insight into the amount of effort put forth by the Court Support Services Division for pre-trial referrals and services



Connecticut Statistical Analysis Center
Institute for the Study of Crime & Justice
Central Connecticut State University

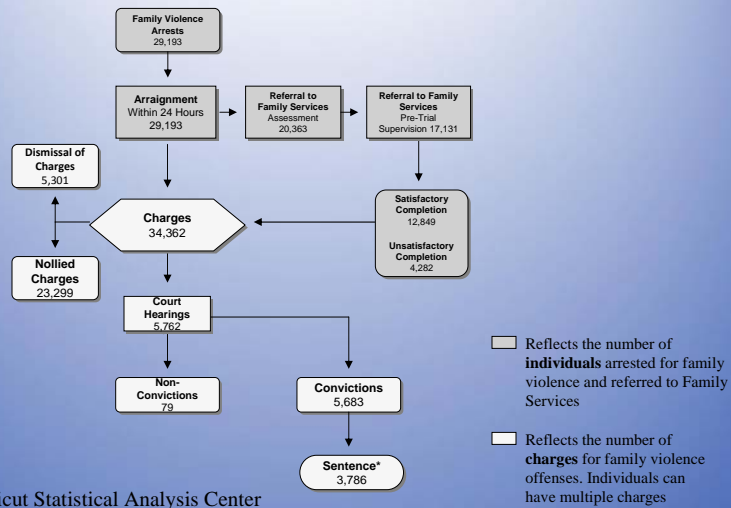
Connecticut Family Violence Arrests



Connecticut Statistical Analysis Center
 Institute for the Study of Crime & Justice
 Central Connecticut State University

Data Source: Department of
 Public Safety (DPS)

Family Violence Case Flow



Connecticut Statistical Analysis Center
 Institute for the Study of Crime & Justice
 Central Connecticut State University

Data Source: Court Support Services
 Division (CCSD)- Judicial

Family Violence Services in Connecticut

- **The Court Support Services Division (CSSD) Family Services within the Judicial Branch oversees the Family Violence Response and Intervention Units.**
- **Units have been established in each Geographical Area of the Superior Court**
- **Defendants are linked with a Family Relations Counselor**
 - Background check
 - Risk assessment screen DVSI-R
 - Level of protective order



Connecticut Statistical Analysis Center
Institute for the Study of Crime & Justice
Central Connecticut State University

Protective Orders 2006 Totals

| Type of Protective Order | 2006 Totals | Percent Total |
|--|-------------|---------------|
| Partial Protective Order | 11,530 | 46% |
| Residential Stay Away Protective Order | 5,663 | 23% |
| Full-No Contact Protective Order | 7,800 | 31% |
| Total Protective Orders | 24,993 | 100% |



Connecticut Statistical Analysis Center
Institute for the Study of Crime & Justice
Central Connecticut State University

Role of the Family Relations Counselor

- **Case Referral to CSSD Family Services**
 - Full case assessment
 - Case management
 - Remain on the criminal docket for further prosecution
- **Reviews incident with both defendant & victim**
- **Assessment interview – explore various interventions**
 - Family Violence Education Program
 - Substance abuse evaluation and treatment
 - Mental Health evaluation and treatment
 - Individual counseling
 - Parenting classes



Connecticut Statistical Analysis Center
Institute for the Study of Crime & Justice
Central Connecticut State University

Domestic Violence Sanction Programs

The Judicial Branch funds three domestic violence sanction programs, the Family Violence Education program (FVEP), EXPLORE and EVOLVE. CSSD also contracts with outside providers that offer substance abuse counseling, mental health evaluation and treatment, parenting classes, and domestic violence counseling and intervention.

| Type of Referral | 2006 Totals | Percent Total |
|--|--------------|---------------|
| Family Violence Education Program (FVEP) | 3,794 | 80% |
| EXPLORE | 584 | 12% |
| EVOLVE | 376 | 8% |
| Total Referrals | 4,754 | 100% |



Connecticut Statistical Analysis Center
Institute for the Study of Crime & Justice
Central Connecticut State University

Family Violence Referrals, 2006

| Referrals | 2006 Totals | Percent Total |
|--|-------------|---------------|
| Refer to Family Services for Assessment | 20,363 | 70% |
| Refer to Family Services for Pre-trial Supervision | 17,131 | 84% |
| Do not refer to Family Services | 8,830 | 16% |

- In 2006, there were 20,363 referrals to CSSD Family Services for assessment
- There were 17,131 referrals for pre-trial case management, 84% of all cases supervised



Connecticut Statistical Analysis Center
Institute for the Study of Crime & Justice
Central Connecticut State University

Charge Outcomes, 2006

| Charge Outcomes | 2006 Totals | Percent Total |
|-------------------------------|---------------|---------------|
| Nollied | 23,299 | 68% |
| Dismissed | 5,301 | 16% |
| Guilty-conditional charge | 1,251 | 4% |
| Guilty- Unconditional Charge | 646 | 2% |
| Guilty-Fine Only | 265 | 0 |
| Guilty- Sentence | 3,520 | 10% |
| Not Prosecuted | 69 | 0 |
| Not Guilty | 5 | 0 |
| Bond Forfeiture | 4 | 0 |
| Guilty- Merged sentence | 1 | 0 |
| Transfer to Part A | 1 | 0 |
| Total Charges Disposed | 34,362 | 100 |



Connecticut Statistical Analysis Center
Institute for the Study of Crime & Justice
Central Connecticut State University

Conclusions

- ❖ State Police reported arrests for family violence are lower than judicial.
- ❖ Significant resources allocated toward family violence programs and services
- ❖ The 68% nolle rate is mainly due to participation in a diversionary program
- ❖ In 2006, there was a 98% conviction rate for those family violence charges that went to trial



Connecticut Statistical Analysis Center
Institute for the Study of Crime & Justice
Central Connecticut State University